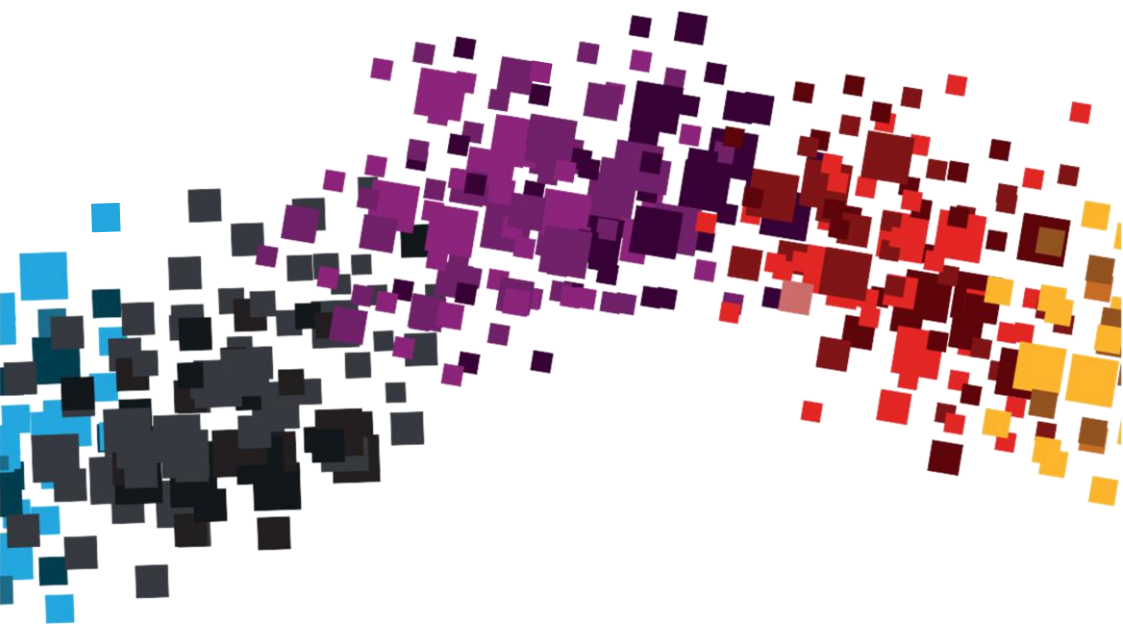


# Lower Valley Local Services



A practical guide to services  
available in the Lower Valley

# Contents

Page No.

## **Early Intervention and Safeguarding**

|  |   |
|--|---|
| Early Intervention Service             | 2 |
| Family Intervention Team               | 2 |
| Family Support Service                 | 2 |
| Calderdale Young Carers                | 3 |
| Independent Advice and Support Service | 3 |
| Contact Service                        | 3 |
| Youth Offending Team                   | 4 |
| Young Peoples Service                  | 4 |
| Lifeline                               | 4 |
| Safe Hands Project                     | 5 |
| Barnardos                              | 5 |
| The Women's Centre                     | 6 |
| Rastrick Big Local                     | 9 |

## **Children's Social Care**

|                             |    |
|-----------------------------|----|
| Multi-Agency Screening Team | 10 |
| First Response Team (FRT)   | 10 |
| Emergency Duty Team         | 10 |

## **Specialist Services**

|  |    |
|--|----|
| Education Welfare Service                      | 11 |
| Looked After Children Education Service (LACE) | 11 |
| Special Educational Needs Team                 | 11 |
| Educational Psychology Service                 | 11 |
| Specialist Inclusion Service                   | 11 |
| Medical Needs Team                             | 12 |

## **Universal Services**

|  |    |
|--|----|
| Health Services                            | 13 |
| Police                                     | 16 |
| Housing                                    | 16 |
| Early Years and Childcare Sufficiency Team | 17 |

## **Before School**

|                           |    |
|---------------------------|----|
| Children's Centres        | 18 |
| Parent and Toddler Groups | 19 |
| Childcare                 | 20 |
| Children's Activities     | 20 |

## **Schools**

|                    |    |
|--------------------|----|
| Calderdale Schools | 23 |
|--------------------|----|

## **Sports and Leisure**

|                           |    |
|---------------------------|----|
| Parks and Open Spaces     | 24 |
| Leisure Centres and Sport | 24 |
| Drama, Dance and Music    | 26 |
| Hobbies                   | 28 |
| Libraries                 | 31 |

## **Growing Up – Transition to Adulthood**

|  |    |
|--|----|
| Apprenticeships                                  | 32 |
| Calderdale College                               | 32 |
| Kirklees College                                 | 33 |
| Prospects Calderdale Pathway Team – Leaving Care | 33 |
| Job Centre Plus                                  | 33 |

# Information about this booklet

Welcome to your Local Services booklet; a guide to the services available in your area.

We have produced this guide to help keep you better informed about the services available to you in your area and how to access them. We hope that you find the content of this booklet useful and informative.

For further information on the individual services please contact the providers directly.

Further details of local services are available at [www.calderdale.gov.uk](http://www.calderdale.gov.uk)



# Early Intervention and Safeguarding

## Early Intervention Service

The idea of early help is simple: by working together with children and families we can prevent issues occurring, or provide better support when they do.

Calderdale's Early Intervention Service has been developed to achieve the vision for locality working. This will ensure that Calderdale Council and its partners can continue to deliver efficient and effective services which families in Calderdale need. Our focus is to deliver intervention which is early and focused for children, young people (0-19) and their families who have been identified as being most at risk of needing supporting from a specialist service.

**Website:** [www.calderdale.gov.uk/advice/parents/early-intervention](http://www.calderdale.gov.uk/advice/parents/early-intervention)

## Family Intervention Team

Calderdale's Family Intervention Team offer support to families that are facing multiple problems and experiencing high levels of disadvantage. This can be identified where needs of a child meet Tier 4 or 5 on the Continuum of Need. The team use intensive tailored action with supervision and clear sanctions to actively promote change and work to help children in need to remain safely within their own homes. A Key Workers' role is to 'grip' the family, the causes of their poor behaviour and the agencies involved with them, to deliver a more co-ordinated and sustained response. The service offers a 'whole family' approach which considers the needs of all family members and assesses the underlying problems driving the family's behaviour in order to identify which services need to be involved,

**Telephone:** 01422 392658

## Family Support Service

Family Support Staff and Family Outreach workers give practical and emotional support to families with children aged 0-19 years with issues such as sleepless nights, behavioural problems, school based issues and at times of crisis and complex problems. Some of this work is in groups, drop in sessions or one to one with you in your home. If it is needed, we can bring together all services to link you with anyone who can help. A team of Family Support Workers and Parent Link Workers work across Central Halifax supporting families in their home and running groups and activities.

**Telephone:** 01422 342552



## Calderdale Young Carers

Calderdale Young Carers Service offers support to young people between 8-18 years, who care for someone at home. Young Carers support family members suffering from a range of issues including physical or mental health problems, learning difficulties, drug and alcohol issues or long enduring illnesses. The service offers a wide range of support to the young person and their families including; weekly activities, one to one work, outreach work, school support, group support sessions and attendance at meetings and reviews.

We also offer a targeted service to young people between 16 and 18 years old. Referrals can be made in many ways, either by professionals or self-referral; in order to make a referral, consent must be given by parents, a diagnosis in the family, and caring roles must impact on the family. The easiest way to make a referral is to contact us by telephone on **01422 261208**, or from a landline (call Freephone) on: **0800 3895785**.

## Information, Advice and Support Service (IAS)

The IASS - Information, Advice and Support Service (formerly Parent Partnership) provides legally based, impartial, confidential advice, information and support, for parents of children and young people with special educational needs and / or disabilities about their education, health and / or care needs. Visit the website: [www.calderdalesendiass.org.uk](http://www.calderdalesendiass.org.uk)

**Telephone for more information:** 01422 266141

## Contact Service

The team provides contact for Children Looked After and their birth families. This may be whilst the case is in proceedings or longer term following the courts decision that the children are to remain in long term care. The aim of contact for the child is to maintain a relationship with and to foster their identity with their birth family. Observations of contact may also contribute to Calderdale's evidence in court regarding its long term plan for the child. This is a statutory service, with referrals for the service coming from Children's Social Care Social Workers. The Team is based in Elland, but contact can also take place across Calderdale and occasionally neighbouring authorities.

**Telephone for more information:** 01422 281210



## **Youth Offending Team**

Calderdale Youth Offending Team is a multi-agency partnership preventing offending by working with young people, parents, victims of crime, communities and engaging volunteers. They are committed to prevent offending by young people by providing appropriate education, support and guidance.

**Telephone:** 01422 368279

**Website:** [www.calderdale.gov.uk/socialcare/youngpeople/youngoffenders/index](http://www.calderdale.gov.uk/socialcare/youngpeople/youngoffenders/index)

## **Youth Clubs/Centres**

The Young People's Service provides a service for young people ages 13-19 in the following areas within the Lower Valley:

- Elland;
- Brighouse and Rastrick;
- Hipperholme and Lightcliffe.

Information and advice for young people including details of youth centres and projects, leisure activities and support services in

Calderdale: [www.calderdale.gov.uk/education/youthsupport](http://www.calderdale.gov.uk/education/youthsupport)

## **Lifeline**

### **Lifelines Families and Communities United**

Lifelines Families and Communities United works with families, young people and community members supporting and empowering people around substance misuse.

Families and Communities United works across Bradford and Calderdale to engage and strengthen communities and families; providing families and individuals with new skills to prevent, tackle and protect themselves against substance misuse issues in the community.

### **Lifelines Young Persons' Services**

Lifeline Calderdale's Young Persons' Services offer advice, information and guidance around drugs, alcohol and sex as well as offering activities, education, arts and sport for all 10-21 year olds.



**Branching Out** is a confidential alcohol and drug service for young people in Calderdale aged 10-21 years. We work with young people who are using alcohol, drugs or solvents at any level, and those at risk of using substances.

**West Yorkshire Positive Futures:**

Working with 10-19 year olds that are involved in ASB and/or offending offering positive activities in groups and on a 1-1 level with young people. We offer a varied selection of activity across the borough including football, gym, fitness and climbing. Referrals can come from any young person, family or professional.

**Get2**

We work with 16-19 year olds who are not in education, employment or training offering accredited courses on subjects such as substance misuse awareness, pursuit of personal goals and participating in leisure activities. We also offer Maths and English at entry level and level 1. There is 1-1 work with learners in progressions into mainstream education and/or employment.

**Contact details:**

Telephone 01422 510000

[www.calderdale.gov.uk/socialcare/youngpeople/substance-misuse](http://www.calderdale.gov.uk/socialcare/youngpeople/substance-misuse)

[www.lifeline.org.uk](http://www.lifeline.org.uk)

**The Safe Hands Project**

This is a service that supports young people affected by child sexual exploitation across the Calderdale district.

For information, support and advice or to make a referral please telephone 01422 430495 or follow the web link below:

<http://www.childrenssociety.org.uk/what-we-do/helping-children/children-risk-streets/childrens-society-calderdale>

**Barnardos Calderdale Early Intervention Service**

Barnardo's delivers the LGBTQ (lesbian, gay, bisexual, transgender and questioning) young people's provision in Calderdale.

IDENTITY LGBTQ Young People's Group:

IDENTITY is a LGBTQ group situated in the Halifax area, formally known as GALYIC. The





group itself offers support and advice to young people coming to terms with their sexuality. We are based in a secure location in the town centre that offers a safe and calm environment for young people to meet and take part in activities together. Young people are supported to access the group through a one to one meeting and introduction to the group.

The young people at IDENTITY meet once a week on a Thursday evening between 5.30pm and 8.30pm. The group itself is run by qualified members of staff and volunteers that are all hand selected by the young people and that are all qualified to deal with and provide advice on any sexuality issues.

Referrals are accepted by young people and family members as well as professionals working with young people. Referrals can be made directly by emailing [identitylgbtgroup@hotmail.com](mailto:identitylgbtgroup@hotmail.com)

**Telephone:** 01422 371993

**Website:** [www.barnardos.org.uk/cornerstone](http://www.barnardos.org.uk/cornerstone)

**Email:** [cornerstone.yorkshire@barnardos.org.uk](mailto:cornerstone.yorkshire@barnardos.org.uk)

## Women's Centre

### Womenslink

This is a first point of contact for women accessing WomenCentre and the Calderdale health and wellbeing pathway for women. Trained staff and volunteers have time to listen to women's worries and concerns and then link them into the most appropriate support or services in Calderdale. There is a health and wellbeing group that looks at the many aspects of emotional wellbeing, such as anxiety, depression, loneliness and sleep difficulties. This also is a gateway to wider WomenCentre services, groups, activities and individual support.

**Telephone:** 01422 386500 / 07738 681596

### Way Forward – a young women and girls resilience project

This service is for girls and young women who have complex and multiple needs, to give them space and time to talk, to enable engagement and to provide the opportunity to affect change and improve their life chances.

**Telephone:** 01422 386540



## **The Maze Project**

The Maze project is available for women aged 18 and above who have experienced domestic violence. The project aims to work with women where you know they are not accessing support and experience difficulty in recognising their situation. If these women are engaging with the project there is also scope for us to work with their partner providing he is acknowledging that he wants to change his abusive behaviour.

**Telephone:** 01422 386506

## **The Independent Domestic Violence Advocacy Service – IDVA**

The IDVA provides crisis intervention, advice and advocacy for anyone assessed as a high risk victim of domestic violence, including men and those of same sex relationships, who are assessed as high risk victims. The service provides short to medium term intensive support to victims including support through the criminal justice system and Multi-Agency Risk Assessment Conferences (MARAC).

**Telephone:** 01422 323339

## **Young Persons Violence Advocate – YPVA**

Specialist support for young people age 13 – 19 who are experiencing domestic abuse within their own intimate relationships.

**Telephone:** 01422 386501

## **Children and Young People’s Domestic Abuse Support – CYPA**

A support service for children and young people. We offer a 1:1 confidential support service for children and young people ages between 5 and 18 who have been affected by domestic abuse in their home.

## **Women’s Support Team**

The team support women who have been subjected to domestic abuse. The service is free, confidential and non judgemental, delivered by trained workers and volunteers to any woman in Calderdale. Support workers will assess the level of risk from an abusive partner / ex-partner and will work to develop an appropriate safety and support plan. Support is provided individually both face to face and by telephone. Support can be offered in some outreach venues, professionals can contact the office to discuss further.

**Telephone:** 01422 323339



## Breaking the Cycle

An early intervention service to support women to recognise domestic abuse at the earliest opportunity and to assist in breaking the cycle before the abuse becomes entrenched. The service takes an assertive outreach approach supporting women and their children.

**Telephone:** 01422 386506 / 323339

## Evolve – Calderdale

The service provides support, advice and information for women offenders, women who are at risk of offending and any woman involved in any aspect of the criminal justice system. There are co-located probation officers based within the team, women can be supported prior to court, with pre-sentence reports, conditional cautions and those women returning back to Calderdale from prison. Support is also offered to women with substance misuse issues, debts, benefits, employment advice, housing advice and offer emotional and practical support.

**Telephone:** 01422 386502 / 07884 401883

## Café Petit

Café Pettit is situated just off the main reception area at WomenCentre Calderdale, we provide a friendly, welcoming women only space. We can also provide buffet catering for up to 20 delegates attending training / meetings at the centre. Opening times: Tuesday to Thursday 10.30 – 1.30pm.

## New Outreach Service

Some women find it difficult to access services at the centre: therefore we are currently developing a skilled Outreach Service which will provide ongoing advice and support to women experiencing domestic abuse and will operate at several community based venues across Calderdale.

The above are just some of the services on offer at WomenCentre, we have much more on offer and this can be found on our website: [Womencentre.org.uk](http://Womencentre.org.uk), or:

**Telephone:** 01422 386500

**Address:** The Women's Centre, 23 Silver Street, Halifax (open Monday – Friday)



## **Rastrick Big Local**

Big Local is an exciting opportunity for residents in 150 areas around England to use at least £1m to make a massive and lasting positive difference to their communities. It's about bringing together all the local talent, ambitions, skills and energy from individuals, groups and organisations who want to make their area an even better place to live.

Big Local is being run by Local Trust, which is working with £200m from the Big Lottery Fund and a range of partners providing expert advice and support for residents.

For more details on the Big Local Outcomes, how Rastrick Big Local is managed and how to access Rastrick Big Local follow the link below:

[www.rastricklocal.co.uk](http://www.rastricklocal.co.uk)



## CHILDREN'S SOCIAL CARE

### Multi-Agency Screening Team (MAST)

MAST is the first point of contact for any new safeguarding concerns or enquiries.

**Telephone:** 01422 393336

**Website:** [www.calderdale.gov.uk/socialcare/family/childprotection/index](http://www.calderdale.gov.uk/socialcare/family/childprotection/index)

### First Response Team

The First Response Team receives all incoming cases and carries out initial assessments and core assessments in order to signpost cases to the most appropriate service for them. **Telephone:** 01422 393340 (For out of hours service please see Calderdale Emergency Duty Team)

**Website:** [www.calderdale.gov.uk/socialcare/family/childprotection/index](http://www.calderdale.gov.uk/socialcare/family/childprotection/index)

### Calderdale Emergency Duty Team

Health and Social Care (Adult Services) and Children and Young People's Services provide an emergency service at nights and weekends, when their offices are closed - the Emergency Duty Team. The service is available to any adult or child who has social care difficulties that are causing a serious risk or concern that cannot be left until the start of the next working day.

**Telephone:** 0845 1111 137

**Website:** [www.calderdale.gov.uk/community/children/outofhours-support](http://www.calderdale.gov.uk/community/children/outofhours-support)



## SPECIALIST SERVICES

### **Education Welfare Service**

The Education Welfare Team provides a channel of communication between home and school and between parents and the Local Authority to ensure that children gain access to, and benefit from educational provision.

[www.calderdale.gov.uk/education/parents/educational-welfare](http://www.calderdale.gov.uk/education/parents/educational-welfare)

### **Looked After Children Education Service (LACE)**

The Virtual School (Looked After Children Education Service) is a core service that provides advice and support to children and young people aged 3-19 years who are Looked After, teachers, school governors, support services, social workers, parents and carers.

[www.calderdale.gov.uk/education/parents/lace](http://www.calderdale.gov.uk/education/parents/lace)

### **Special Educational Needs Team**

This is a statutory independent service which provides information, advice and support to parents of children aged 3-19 with Special Educational Needs.

[www.calderdale.gov.uk/education/parents/sen](http://www.calderdale.gov.uk/education/parents/sen)

### **Educational Psychology Service**

Educational Psychologists provide a service to support the educational, social and mental health needs of children and young people who may be vulnerable, at risk or have special needs.

[www.calderdale.gov.uk/education/parents/educational-psychology](http://www.calderdale.gov.uk/education/parents/educational-psychology)

### **Specialist Inclusion Service**

An experienced team of specialists who enable impaired children and young people to achieve their full potential within schools and the community. This service is made up of three teams: The Hearing Impairment Team – (HI), The Visual Impairment Team – (VI) and Autism Spectrum Condition Team – (ASD).

[www.calderdale.gov.uk/education/childcare/familiesdirectory](http://www.calderdale.gov.uk/education/childcare/familiesdirectory)

[www.calderdale.gov.uk/siteinfo/atoz](http://www.calderdale.gov.uk/siteinfo/atoz)



## Medical Needs Team

Calderdale Medical Needs Team support children and their parents while they are unable to go to school for more than fifteen working days because of illness.

[www.calderdale.gov.uk/education/parents/children-medicalneeds](http://www.calderdale.gov.uk/education/parents/children-medicalneeds)

## Junior Gateway

Youth clubs for disabled young people aged 13- 25.

**Address:** Eastfield Jubilee Centre, Stoney Lane, Lightcliffe, Halifax, HX3 8TL

**Telephone:** 01484 404750/ 205034



## UNIVERSAL SERVICES

### Health Services

#### Midwives

They offer universal services for pregnancy up to 19 years. This is offered in a range of health care settings, GP clinics, Children's Centres and schools; offering specialist support for vulnerable women in pregnancy, (Eden Team) including substance misuse, mental health and teenage pregnancy. The Family Nurse Partnership provides targeted intervention for pregnant vulnerable teenagers.

**Telephone:** 01484 728934 (referrals are then made by the Midwife to Eden Team and Family Nurse Partnership).

**Website:** [www.cht.nhs.uk/services/clinical-services-a-z/children-womens-services/maternity-services](http://www.cht.nhs.uk/services/clinical-services-a-z/children-womens-services/maternity-services).

#### School Nursing

Qualified nurses who have done additional training and who can offer support and advice on a wide range of health issues. The service supports all children and young people aged 4 – 18 who attend a Calderdale school.

**Telephone:** 01484 712515

**Website:** [www.calderdale.nhs.uk/local-services/a-z-listing/school-nursing](http://www.calderdale.nhs.uk/local-services/a-z-listing/school-nursing)

#### Health Visiting

Families are referred by their midwife or GP if they are new to the area.

They have clinics in the following Children's Centres:

Jubilee Children's Centre – 01422 342552

Siddal Children's Centre – 01422 354976

Boothtown Children's Centre – 01422 250365

New Road Children's Centre – 01422 835614

**Website:** [www.cht.nhs.uk/services/clinical-services-a-z/community-services/calderdale-health-visitors](http://www.cht.nhs.uk/services/clinical-services-a-z/community-services/calderdale-health-visitors)

#### Community Mental Health Team – Central Halifax

Support to people with mental health difficulties. Aim to enable people of working age with a severe mental illness to receive appropriate health and social care in order that they can lead as independent lives as possible.

**Telephone:** 01422 383062

**Website:** [www.calderdale.gov.uk/socialcare/mentalhealth/services/index](http://www.calderdale.gov.uk/socialcare/mentalhealth/services/index)





### **Calderdale Stop Smoking Service**

Stopping smoking is easier than you think with the guidance and support from the Calderdale specialist NHS stop smoking service.

**Telephone:** 01422 281505

**Website:** [www.calderdale.gov.uk/socialcare/health/stop-smoking](http://www.calderdale.gov.uk/socialcare/health/stop-smoking)

### **Calderdale in Recovery**

This is an online resource for help with drugs and alcohol including organisations that could support with specific issues on the road to recovery, information on common drugs and help and support for friends and family members.

**Website:** <http://www.calderdaleinrecovery.com>

### **Postnatal Support in Calderdale**

This is a small, free of charge postnatal Depression (PND) support group based in the Halifax area for sufferers and those who have recovered from PND. Confidential telephone advice and signposting service. Visit the Family Services Directory for more information:

**Website:** [www.calderdale.gov.uk/education/childcare/families\\_directory](http://www.calderdale.gov.uk/education/childcare/families_directory)

### **The Calderdale Homebirth Support Group**

A group meeting in Calderdale and Huddersfield on alternate months to support people interested in having a home birth. There will be shared stories from Mum and Dads to help people make informed decisions that are right for them. Partners, family and children welcome. Visit the Family Services Directory for more information:

**Website:** [www.calderdale.gov.uk/education/childcare/familiesdirectory](http://www.calderdale.gov.uk/education/childcare/familiesdirectory)

### **Healthy Minds**

Health Minds Information Service is a Calderdale Wellbeing project. A free and confidential service for mental health and wellbeing. Regular information sessions held in a number of venues across Calderdale – check website for details.

**Website:** [www.healthymindscalderdale.gov.uk](http://www.healthymindscalderdale.gov.uk)



## **Patient Advice and Liaison Service (PALS)**

PALS are set up in every NHS Trust to support the on-going development of patient focused care. PALS acts independently when handling patient and family concerns, liaising with staff, managers and where appropriate relevant organisations.

**Telephone:** 0300 311 22 33

**Website:** [www.calderdaleccg.nhs.uk/contact-us/patient-advice-and-liaison-service-pals](http://www.calderdaleccg.nhs.uk/contact-us/patient-advice-and-liaison-service-pals)

## **The Stroke Association**

The Stroke Association provides an advice and support service to offer support and practical information for people who have had a stroke as well as their family and carers. Help arranging transport can be provided.

**Telephone:** 01484 714147

**Website:** [www.stroke.org.uk](http://www.stroke.org.uk)

**Email:** [calderdale@stroke.org.uk](mailto:calderdale@stroke.org.uk)

## **St. John's Ambulance**

Runs local first aid courses. For details please contact on the telephone number below. Volunteering opportunities are available for both adults and children.

**Telephone:** 01924 262726

**Website:** [www.sja.org.uk](http://www.sja.org.uk)



## Police

Ways to contact the police in the Lower Valley Area:

**Telephone:** Emergency 999 Non Emergency 101  
Brighouse Police station - 01484 405251 (direct line)

**Address:** Bradford Road Brighouse HD6 4AA

This line is not permanently staffed but callers can leave a voicemail and we aim to contact them within 24hrs.

**Email :** [calderdale.npt@westyorkshire.pnn.police.uk](mailto:calderdale.npt@westyorkshire.pnn.police.uk)

### Brighouse Police Contact Point

This is open Monday through until Friday between 1300 - 1600hrs. Everyone is welcome to attend in person and discuss their concerns.

### Partners and Communities Working Together Meetings (PACT)

All 5 wards have a PACT meeting held every 6 weeks. Members of the community are encouraged to attend to raise any issues of concern. If the matter is personal/sensitive they are free to speak to the local Officers at the end of the meeting.

[www.westyorkshire.police.uk/calderdale/lower-valley](http://www.westyorkshire.police.uk/calderdale/lower-valley)

## Housing

### Pennine Housing

Pennine Housing own and manage 11,500 homes in the Calderdale area. With choice based lettings you are now in control. If you are already one of our tenants or leaseholders, we have a range of services available for you. If you are a member of the community, part of a tenants group, or want to find out more about Pennine and get involved, contact the office.

**Telephone:** 0300 555 5557

**Website:** [www.togetherhousing.co.uk](http://www.togetherhousing.co.uk)

### PH2k Tenant Participation Service

Advice and help in setting up a residents group (PH2k estates only).

**Telephone:** 0300 555 5557

**Website:** [www.ph2k.org.uk](http://www.ph2k.org.uk)



## The Early Years and Childcare Sufficiency Team

The Early Years & Childcare Sufficiency Team provides information on parent and toddler groups, childcare, pre-school early education and services to support families of children and young people aged 0-19.

**Address:** Calderdale Council, Northgate House, Northgate, Halifax, HX1 1UN

**Telephone:** 01422 392576

**Email:** [fis@calderdale.gov.uk](mailto:fis@calderdale.gov.uk)

Opening Hours – Monday to Friday 9.00am – 5.00pm.

Information on childcare is available at:

<http://www.calderdale.gov.uk/education/childcare/providers/index.jsp>

Information on the free early education entitlement for eligible two, three and four year olds is available at:

<http://www.calderdale.gov.uk/education/childcare/providers/education.html>

Advice on registering as a child-minder is available at:

<http://www.calderdale.gov.uk/education/childcare/childminding/index.html>



## BEFORE SCHOOL

### Children's Centres

Children's Centres offer services for children and families, providing early years education and childcare, parenting and family support and health services, all under one roof. Visit the website:

[www.calderdale.gov.uk/education/childcare/childrenscentres](http://www.calderdale.gov.uk/education/childcare/childrenscentres)

#### Elland Children's Centre

**Address:** Boxhall Road, Elland HX5 0BB

**Tel:** 01422 373133

**Website:**

[www.calderdale.gov.uk/education/childcare/childrenscentres/elland.html](http://www.calderdale.gov.uk/education/childcare/childrenscentres/elland.html)

#### Field Lane Children's Centre

**Address:** Burnsall Road, Rastrick, Brighouse, HD6 3JT

**Tel:** 01484 386621

**Website:**

[www.calderdale.gov.uk/education/childcare/childrenscentres/rastrick.html](http://www.calderdale.gov.uk/education/childcare/childrenscentres/rastrick.html)

#### Holywell Green Family Centre

**Address:** Stainland Road, Holywell Green, Halifax, HX4 9AE

**Tel:** 01422 373133

**Website:**

<http://www.calderdale.gov.uk/education/childcare/childrenscentres/holywell.html>

#### Wellholme Park Children's Centre

**Address:** Bradford Road, Brighouse, HD6 4AF

**Telephone:** 01484 714768

**Website:**

[www.calderdale.gov.uk/education/childcare/childrenscentres/wellholmepark.html](http://www.calderdale.gov.uk/education/childcare/childrenscentres/wellholmepark.html)



## Parent and Toddler Groups

### Busy Bees

**Address:** St Martin's Church, Church Lane, Brighouse

Opening times: Friday 13:30 - 15:00

### Greetland Parent and Toddler Group

**Address:** Greetland Community Centre, Rochdale Road, Greetland

Opening times: Tuesday 09:30 - 11:30

### Holywell Green Parent and Toddler Group

**Address:** Stainland and Holywell Green Church, Stainland Road, Holywell Green, Halifax

HX4 9AJ

Opening times: Monday 09:30 - 11:30 and Thursday 09:30 - 11:30

### Hove Edge Parent and Toddler Group

**Address:** Hove Edge Working Men's Club, Denholme Gate Road, Hove Edge, Brighouse

Opening times: Tuesday 09:30 - 11:00 and Thursday 09:30 - 11:00

### St John's Parent and Toddler Group

**Address:** St John's Church, off Gooder Lane, Rastrick, Brighouse, HD6 1HN

Opening times: Thursday 09:45 - 11:15

### St Matthew's Toddler Group

**Address:** St Matthew's Parish Church, Church Street, Rastrick, Brighouse

Opening times: Thursday 09:30 - 11:15

### Go Bananas Parent and Toddler Group

**Address:** Bankfield Social Club, Huddersfield Road, Elland

Opening times: Wednesday 09:40 - 11:40

### Busy Babes Parent & Toddler Group

**Address:** Christ Church, Leeds Road, Lightcliffe, Halifax, West Yorkshire, HX3 8NU

Opening times: Monday 10:00 - 11:30 and Friday 10:00 - 11:30



### **Bailiff Bridge Baby & Toddler Group**

**Address:** Ebenezer Methodist Church, 605 Bradford Road, Bailiff Bridge, Brighouse, HD6 4DH

Opening times: Tuesday 09:15 - 10:45

### **Elland Parish Parent & Toddler Group**

**Address:** All Saints Church, Savile Road, Elland, Halifax, West Yorkshire, HX5 0LA

Opening times: Thursday 09:30 to 11:00

### **Sowood Pre-School and Toddlers**

**Address:** Sowood Community Centre, Stainland Road, Sowood, Halifax, HX4 9HY

Opening times: Wednesday 09:30 - 11:30

### **Cornerstone Church Parent & Toddler Group**

**Address:** Cornerstone Church Hall, Bradford Road, Brighouse, Brighouse, HD6 4AD

Opening times: Wednesday 09:15 - 10:45

For further details please see the Family Services Directory:

[www.calderdale.gov.uk/education/childcare/familiesdirectory](http://www.calderdale.gov.uk/education/childcare/familiesdirectory)

## **Childcare**

For up to date information on child care and early education providers in Calderdale please follow the link below:

[www.calderdale.gov.uk/education/childcare/providers](http://www.calderdale.gov.uk/education/childcare/providers)

## **Children's Activities**

### **Action Kids Club**

Physical Development with fun for 0 - 5 years.

Address: Venues may change – check online for details.

**Website:** [www.actionkids.co.uk](http://www.actionkids.co.uk)



### **Kraffi Kidz**

A Kraffi Kidz session provides pre-school children and their carers an opportunity to take part in lots of arts, crafts and messy play without messing up your own home!

For more information follow the link below:

[www.calderdale.gov.uk/education/childcare/familiesdirectory](http://www.calderdale.gov.uk/education/childcare/familiesdirectory)

### **Rough & Tumbles**

Playcentre open for children 0 - 6 years. Children's parties available - call for details. Parking available on the street nearby.

**Address:** 1st Floor, Central Hall, 12 Coronation Street, Elland, HX5 0DF

**Telephone:** 01422 311797

### **Shenanigans Playbus**

Fully internally converted double decker soft play area for 2 - 10 year old children. Available to hire for parties, galas, carnivals, fetes, fayres, wedding and charity events.

**Telephone:** 01422 310093

**Website:** [www.shenanigansplaybus.co.uk/](http://www.shenanigansplaybus.co.uk/)

**Email:** [playbusinfo@yahoo.com](mailto:playbusinfo@yahoo.com)

### **Kidzville**

Soft Play Gym offering a clean, safe and friendly environment for child to play. Plus a café for parents. Children's parties available. Pre-school and after school classes and activities on offer.

**Address:** 10 Church Street, Greetland, Halifax, HX4 8EG

**Telephone:** 01422 311293

**Email:** [enquiries@kidzvillehalifax.co.uk](mailto:enquiries@kidzvillehalifax.co.uk)

### **Boogie Babes**

A session of dance and fun with sing-a-long songs and exciting games. Boogie Babes activities are specifically tailored for babies and children of up to school age.

**Website:** [www.boogiebabes.biz](http://www.boogiebabes.biz)





## **Adventure World**

Fun play for children up to 9 years, including separate baby area.

**Address:** Unit 2, James Street, Elland, HX5 0HB

**Telephone:** 01422 252208

For information on more children's activities please visit the website:

[www.calderdale.gov.uk/leisure/activities/children](http://www.calderdale.gov.uk/leisure/activities/children)



**Calderdale**  
Council

## CALDERDALE SCHOOLS

You can search for information about all Calderdale primary and secondary schools by name, postal district and type and find headteachers, address, web sites, maps and links to Ofsted reports and performance tables for each school: [www.calderdale.gov.uk/education/schools/calderdale-schools/findschools](http://www.calderdale.gov.uk/education/schools/calderdale-schools/findschools).

You can also find out about school term dates, admissions to primary and secondary school and information about travel to school: [www.calderdale.gov.uk/education/schools](http://www.calderdale.gov.uk/education/schools)



## SPORT AND LEISURE

### Parks and Open Space

To access information on local play areas, parks, cycle routes, fishing, paths and bridle ways, allotment gardens, fishing, outdoor gyms and nature reserves follow the following link:

<http://www.calderdale.gov.uk/leisure/openspaces/>

### Leisure Centre and Sport

#### Brighouse Swimming Pool and Fitness Centre

The pool and fitness centre offers a 25 metre swimming pool, 20 metre teaching pool, multi station techno gym fitness studio, extensive fitness class timetable and swimming lessons.

**Address:** Woodvale Road, Brighouse, HD6 4AX

**Email:** [sport@calderdale.gov.uk](mailto:sport@calderdale.gov.uk)

**Website link:** [www.calderdale.gov.uk/leisure/sport-fitness/sports-centres-pools](http://www.calderdale.gov.uk/leisure/sport-fitness/sports-centres-pools)

#### Hipperholme and Lightcliffe Community Sports Centre

School and sports activity centre, sports hall, artificial turf pitches, grass pitches, dance studio, climbing wall etc. Offers a wide variety of activities for all ages.

**Address:** Stoney Lane, Lightcliffe, Halifax, HX3 8TL

**Telephone:** 01422 200499

**Website:** [www.hiplight.calderdale.sch.uk](http://www.hiplight.calderdale.sch.uk)

#### Judo Excellence

Judo Clubs running in Hebden Bridge, Northowram and Bailiff Bridge. Focuses on competitive judo but also aims to develop its members into fully rounded judoka.

**Website:** [www.judoexcellence.co.uk](http://www.judoexcellence.co.uk)

#### Rastrick Juniors Football Club

Holds FA Charter status and accommodates players of all ages with teams at every level from under 6s to under 18s. Join in for training or league matches.

For more information follow the link below:

[www.calderdale.gov.uk/education/childcare/familiesdirectory/index](http://www.calderdale.gov.uk/education/childcare/familiesdirectory/index)



### **Swimrite, Brighouse**

Swimming lessons in small dedicated pool with friendly qualified teachers.

**Address:** 254 Thornhill Road, Rastrick, Brighouse, HD6 3HL

**Telephone:** 01484 388561

### **Brighouse Traditional Karate Club**

Traditional karate club open to all ages 8 and above. Qualified instructor.

**Website:** [www.btkc.co.uk](http://www.btkc.co.uk)

### **Greetland Goldstars Junior Football Club**

The club runs mini soccer teams from under 7s to under 10s (mixed teams). Junior teams from under 11s to under 17s (boys). They also have an under 12s girls' team and are looking to start an under 11s girls' team. Training times are on the club's web site.

**Address:** Greetland Community Centre, Rochdale Road, Greetland, Halifax, HX4 8JG

**Website:** [www.greetland-goldstars.talktalk.net](http://www.greetland-goldstars.talktalk.net)

**Email:** [goldstarsjfc-website@yahoo.co.uk](mailto:goldstarsjfc-website@yahoo.co.uk)

### **Halifax Tae Kwon Do**

Martial arts club delivered by fully qualified, experienced instructor. Operates from Cartwheel Club Elland. Suitable for children aged 5 and above.

**Address:** Cartwheel Youth Club, Huddersfield Road, Elland, HX5 9DW

**Website:** [www.halifaxtkd.co.uk](http://www.halifaxtkd.co.uk)

### **Halifax Sports Acro**

Provides Sports Acrobatics Gymnastics for children aged 4 through to adults.

Catering for beginners to national level gymnasts. Classes run at Greetland Community Centre, Brooksbank School, Burnley Road School and Sacred Heart School.

**Telephone:** 01422 311989

**Website:** [www.halifaxsportsacro.co.uk](http://www.halifaxsportsacro.co.uk)

**Email:** [admin@halifaxsportsacro.co.uk](mailto:admin@halifaxsportsacro.co.uk)



### **Park Tennis Club, Brighouse**

Park Tennis Club is a small friendly club where you will be welcomed regardless of age of ability. For more information follow the link below:

[www.calderdale.gov.uk/education/childcare/familiesdirectory/index](http://www.calderdale.gov.uk/education/childcare/familiesdirectory/index)

Further information on clubs and societies, sports centres and swimming pools and exercise opportunities for everyone can be found at:

[www.calderdale.gov.uk/leisure/sport-fitness](http://www.calderdale.gov.uk/leisure/sport-fitness)

## **Drama, Dance and Music**

### **Cheervision Yorkshire - Cheerleading**

Dynamic engaging cheerleading classes for everyone aged 3-18 years old. DBS checked and registered coaches.

**Address:** Hipperholme and Lightcliffe High School, Stoney Lane, Hipperholme, HX3 8TL

**Website:** [www.cheervisionyorkshire.co.uk](http://www.cheervisionyorkshire.co.uk)

### **The Dynamites**

Community cheerleading group in Brighouse open to children of all ages, abilities and for both boys and girls

### **Shine Theatre School**

Shine Theatre Arts are a dance school with an ambition to pass on a passion and love for dance to all their pupils. Classes include Ballet, Jazz, Modern and Tap.

**Address:** St Thomas' Church Hall, Greetland, Halifax.

**Telephone:** 01422 820508

### **Limelight Theatre School**

Street dance (10 - 14 years), Adult dance and exercise, Drama for all (5 - 12 years), Boogies Babes (walking up to school age) and Junior Street Dance (5 - 9 years)

**Address:** St Matthew's Parish Centre, Rastrick, HD6 3NF

**Email:** [info@limelighttheatre.biz](mailto:info@limelighttheatre.biz)



### **Stage Academy**

School for the performing arts for children aged 3-18. Junior classes for children aged between 3 - 7 take place on Saturday from 10:30 am - 12:00 pm. Classes for 8 - 18 year olds take place on Sunday from 10.00 am – 1.00 pm

**Address:** 25 Commercial Street, Brighouse, HD6 1AF

**Telephone:** 01484 723557

**Website:** [www.thestageacademy.co.uk](http://www.thestageacademy.co.uk)

**Email:** [info@thestageacademy.com](mailto:info@thestageacademy.com)

### **Studio 1 School of Dance**

Dance for all ages and abilities.

**Address:** Brighouse Arts Centre, 25 Commercial Street, Brighouse, HD6 1AF

**Telephone:** 01484 723557

**Website:** [www.studio1dance.co.uk](http://www.studio1dance.co.uk)

### **Abinitio School of Dance**

Classes include tap, jazz, holiday clubs, drama productions, amateur and professional. Adult classes available too.

**Address:** Clifton House, Clifton Mills, Bradford Road, Brighouse

**Website:** [www.abinitiodance.co.uk](http://www.abinitiodance.co.uk)

**Email:** [scattdance@hotmail.com](mailto:scattdance@hotmail.com)

### **Brighouse Arts Centre**

Cheerleading, Streetdance, Freestyle/Disco, Beginners Ballet and Tap (for children aged 6 - 8) and Stage Academy for drama dance and vocal training.

**Address:** 1st floor, 25 Commercial Street, Brighouse, HD6 1AF

**Telephone:** 01484 723557

**Website:** [www.brighouseartscentre.com](http://www.brighouseartscentre.com)

**Email:** [info@brighouseartscentre.com](mailto:info@brighouseartscentre.com)

### **The Janet Austin Tappers**

Adult tap dancing classes in Brighouse. The class is open to adults of all ages; newcomers welcome.

**Address:** Waring Green Community Centre, Brighouse, HD6 2AX

**Telephone:** 01484 712217



### **Tonic Dance Sport**

Ballet and tap classes for children aged 2 - 16. Theatre craft from 7 upwards. Street dance class from 8 upwards. Fitness class on Sunday aged 16 - 60. Tutor is CRB checked and a fully qualified dance teacher.

**Address:** Assembly Rooms (Masonic Hall), Briggate, Brighouse, HD6 1EF

**Telephone:** 01484 609246

**Website:** [www.tonicdancesport.co.uk](http://www.tonicdancesport.co.uk)

**Email:** [enquiries@tonicdancesport.co.uk](mailto:enquiries@tonicdancesport.co.uk)

### **West Yorkshire Vocal Academy**

**Telephone:** 01422 376114

**Website:** [www.myspace.com/westyorkshirevocalacademy](http://www.myspace.com/westyorkshirevocalacademy)

### **Clifton and Lightcliffe Band**

To encourage a love of music and teach the art of brass playing to anyone who wants to learn. Senior Band, Junior Band and Learners Band (for children aged 5-10)

**Telephone:** 01422 210875

**Website:** [www.cliftonband.co.uk](http://www.cliftonband.co.uk)

### **Elland Silver Youth Brass Band**

Beginners, intermediates and experienced players welcome to join the band. Subscription cost covers tuition and use of instruments. Band Room is at Spa Well, Dewsbury Road, Elland.

**Telephone:** 01484 717126

**Website:** [www.ellandsilverband.co.uk](http://www.ellandsilverband.co.uk)

**Email:** [ellandband@hotmail.co.uk](mailto:ellandband@hotmail.co.uk)

## **Hobbies**

### **La Jolie Ronde**

La Jolie Ronde gives children the opportunity to learn French and Spanish at an age (3 - 11) when they are most receptive and uninhibited by learning in small classes with children of their own age group. The national number can help locate your nearest class.

**Telephone:** 0113 250 0809



**Website:** [www.lajolieronde.co.uk](http://www.lajolieronde.co.uk)

**Email:** [info@lajolieronde.co.uk](mailto:info@lajolieronde.co.uk)

### **Bridge Tuition**

Bridge Club and bridge tuition. There are three qualified teachers available. Daytime and evening lessons available.

**Address:** Oddfellows Hall, 2 Industrial Street, Brighouse, HD6 1TY

**Telephone:** 01484 721058

**Website:** [www.brighousebridgeclub.co.uk](http://www.brighousebridgeclub.co.uk)

### **Brighouse and Halifax Model Engineers**

The society operates and maintains a miniature railway with primarily steam driven locomotives. Open to the general public each month April to October plus Santa Specials in December. Local charities and Chernobyl children's charities are supported.

**Telephone:** 01484 717140

**Website:** [www.bhme.co.uk](http://www.bhme.co.uk)

### **Brighouse Chess Club**

Chess Club for all ages. Meets every Monday at the Cliffe Hall Club, Brighouse. Players of all standards welcome.

**Address:** Cliffe Hall Club, Cliffe Road, HD6 1HE

**Telephone:** 01484 718864

**Website:** [www.bardelang.f2s.com/chess/brighousechess.htm](http://www.bardelang.f2s.com/chess/brighousechess.htm)

**Email:** [brighousechess@f2s.com](mailto:brighousechess@f2s.com)

### **Hopscotch**

Hopscotch classes are designed for pre-school children aged newborn up to, and including, 3 year olds. They incorporate music, dance and imaginative play to develop confidence, social skills and coordination. Each session covers a variety of fun songs and games, baby signing, dance, parachute and bubble time activities. Parents must accompany their child during the class.

**Address:** Brighouse Arts Centre, 25 Commercial Street, Brighouse, HD6 1AF

For more information follow the link below:

[www.calderdale.gov.uk/education/childcare/familiesdirectory/index](http://www.calderdale.gov.uk/education/childcare/familiesdirectory/index)





### **Rotary Club**

Rotary members are enthusiastic, fun-loving and active volunteers who give their time and talents to serve communities both at home and overseas. These are dedicated people, men and women from business and professions, who share a common interest in helping others.

#### **Rotary Club - Brighouse**

**Telephone:** 01484 718340

**Website:** [www.ribi.org](http://www.ribi.org)

#### **Rotary Club - Elland**

**Address:** Baines Hall, Elland Cricket Club, Hullen Edge Road, Elland, HX5 0QY

**Telephone:** 01422 372682

**Website:** [www.ellandrotary.co.uk](http://www.ellandrotary.co.uk)

### **The Boys' Brigade**

Fun, football, competitions, activity days, badges, games, camping and more. Anchor Boys aged 5-7yrs, Junior Section aged 8-11yrs, Company Section aged 12-14yrs and the Seniors aged 15-19.

**Telephone:** 01422 833794

**Website:** [www.halifaxbb.co.uk](http://www.halifaxbb.co.uk)

For more information follow the link below:

[www.calderdale.gov.uk/education/childcare/familiesdirectory/index](http://www.calderdale.gov.uk/education/childcare/familiesdirectory/index)



## Libraries

### Elland Library

**Address:** Coronation Street, Elland HX5 0DF

**Telephone:** 01422 374472

**E-mail:** [elland.library@calderdale.gov.uk](mailto:elland.library@calderdale.gov.uk)

### Brighouse Library

**Address:** Halifax Road, Brighouse HD6 2AF

**Telephone:** 01422 288060

**E-mail:** [brighouse.library@calderdale.gov.uk](mailto:brighouse.library@calderdale.gov.uk)

### Hipperholme Library

**Address:** Council Offices, Leeds Road, Hipperholme, Halifax, HX3 8ND

**Telephone:** 01422 202257.

**Email:** [hipperholme.library@calderdale.gov.uk](mailto:hipperholme.library@calderdale.gov.uk)

### Rastrick Library

**Address:** Crowtrees Lane, Rastrick, Brighouse HD6 3NE

**Telephone:** 01484 714858.

**E-mail:** [rastrick.library@calderdale.gov.uk](mailto:rastrick.library@calderdale.gov.uk)

### Bailiff Bridge Library

**Address:** Devon Way, Bailiff Bridge, Brighouse HD6 4DT

**Telephone:** 01484 719164

**Email:** [bailiff\\_bridge.library@calderdale.gov.uk](mailto:bailiff_bridge.library@calderdale.gov.uk)

### Greetland Library

**Address:** Rochdale Road, Greetland, Halifax HX4 8JE

**Telephone:** 01422 376068

**E-mail:** [greetland.library@calderdale.gov.uk](mailto:greetland.library@calderdale.gov.uk)

Visit the Libraries Services web pages to find out more information about your local library, including opening times, search the catalogue, renew your loans, reserve your next book and manage your library account: [www.calderdale.gov.uk/leisure/libraries](http://www.calderdale.gov.uk/leisure/libraries)



## GROWING UP – TRANSITION TO ADULTHOOD

### Apprenticeships

#### Grow your future: Support for young people

Grow your future is designed to provide apprenticeships and work opportunities for young people in Calderdale through paid work experience placements, pre-apprenticeships and apprenticeships.

For more information contact the Grow Your Future Team:

**E-mail:** [growyourfuture@calderdale.gov.uk](mailto:growyourfuture@calderdale.gov.uk)

**Telephone:** 01422 364092.

**Website:** [www.calderdale.gov.uk/employment/training/grow-your-future/index](http://www.calderdale.gov.uk/employment/training/grow-your-future/index)

### Jephson Housing Association

Provide general family housing, low-cost home ownership, housing for older people and housing for tenants with support needs. Out of area telephone 0800 783 0660.

**Address:** Jephson House, Old Power Way, Lowfields Business Park, Elland, HX5 9DE

**Telephone:** 01422 373855

**Website:** [www.jephson.org.uk](http://www.jephson.org.uk)

**Email:** [north@jephson.org.uk](mailto:north@jephson.org.uk)

For further details on housing associations follow the link below:

[www.calderdale.gov.uk/housing/findahome/housing-associations](http://www.calderdale.gov.uk/housing/findahome/housing-associations)

### Calderdale College

Calderdale College offers a wide range of full and part time courses in addition to work-based learning opportunities.

**Address:** Francis Street, Halifax, HX1 3UZ

**Telephone:** 01422 357357

**Website:** <http://www.calderdale.ac.uk/>



## Kirklees College

Kirklees College has a vast range of courses and study options to choose from many centres across Kirklees serving the local population, communities and businesses.

**Address:** Waterfront Quarter, Manchester Road, Huddersfield, HD1 3HH

**Telephone:** 01484 437000

**Email:** [info@kirkleescollege.ac.uk](mailto:info@kirkleescollege.ac.uk)

**Website:** [www.kirkleescollege.ac.uk](http://www.kirkleescollege.ac.uk)

## Prospects Calderdale Pathway Team - Leaving care

The Prospects Calderdale Pathway Team works with young people aged 16 and over who are from Calderdale who are looked after, or who have left care up to the age of 21, or up to age 25 if the young person is in further or higher education. We provide a wide range of services, information and support. We work with young people and provide advice and support to help make the right choices and decisions through the transition to adulthood.

**Telephone:** 01422 394099

Full details of this service can be found by searching at:

<http://www.calderdale.gov.uk/socialcare/wellbeing-hub>

## Job Centre Plus

To make a first claim telephone 0800 0556688; to discuss benefits telephone 01422 424600. Please ring to make an appointment

**Address:** Crossfield House, St James' Road, Halifax, HX1 1YS

**Telephone:** 0845 604 3719

**Website:** [www.gov.uk/jobsearch](http://www.gov.uk/jobsearch)



# Contact us

We are here to help you and your family and if you have any further questions or concerns or would like more information, please contact us:

## Parveen Akhtar

Early Intervention Service Manager  
(Lower Valley)

Tel: **01422 394094**

Email: [eis.lowervalley@calderdale.gov.uk](mailto:eis.lowervalley@calderdale.gov.uk)

Map of Lower Valley



Produced by Calderdale Council August 2014