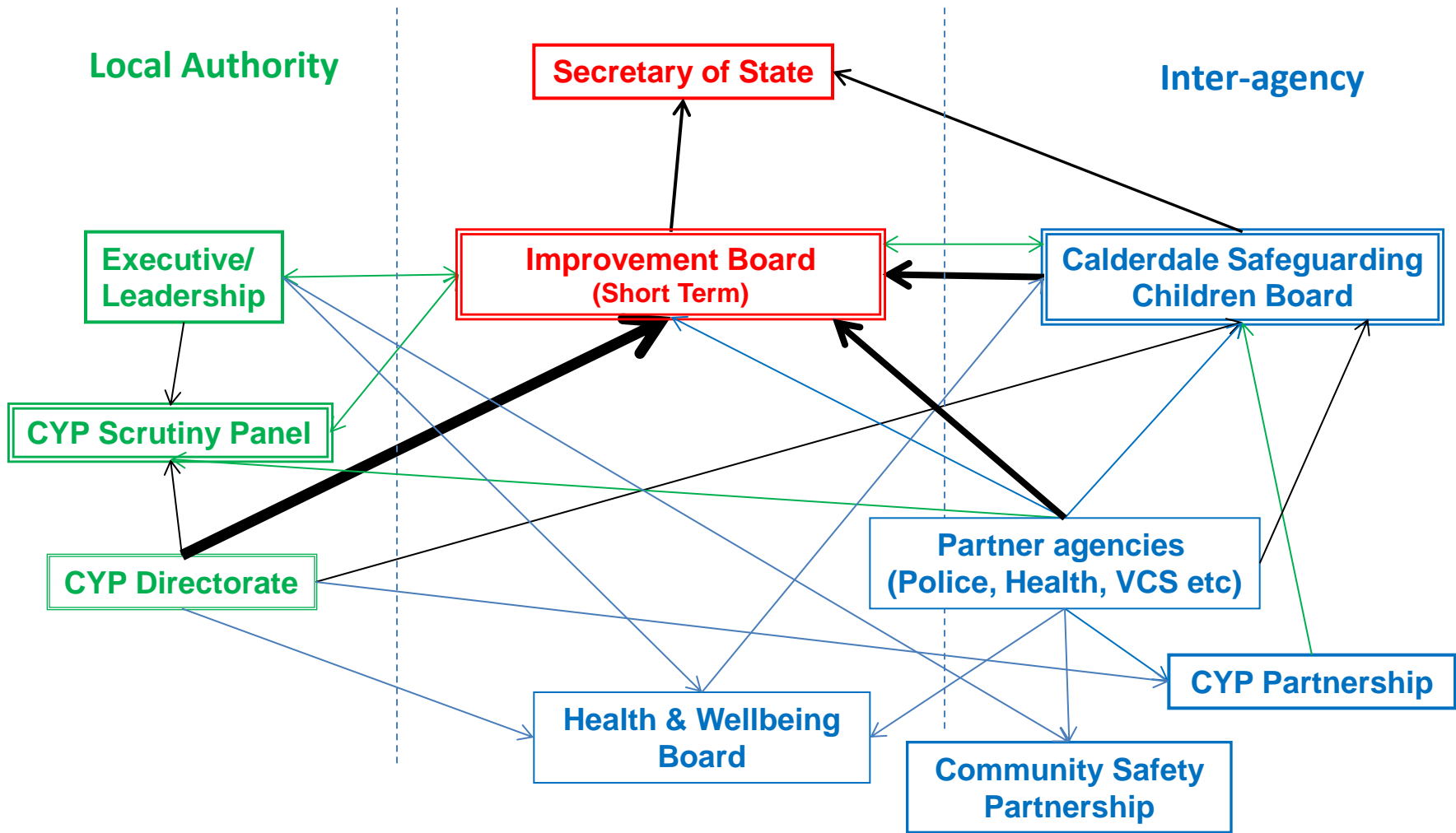


Calderdale Children's Services Governance and Relationship Map



Key: Double-lined box indicates governance function.

Relative thickness of connecting lines indicates level of accountability

→ Accountability
 ↔ Feeds into
 → Member of

Governance relating to Children and Young People's Services, with particular preference to Children's Social Care and the wider Children and Young People's Partnership.

Calderdale MBC Children and Young People's Scrutiny Committee

- This committee provides scrutiny and public accountability to the entire range of CYP functions (Education, Early Help and statutory Social Care), as its primary function. As part of this responsibility there may be scrutiny and comment on the role of partners, particularly schools. This committee may request reports from LSCB and IB.

Calderdale LCSB

- This Board provides support and challenge, in relation to the work of the entire CYP partnership, as it relates to all aspects of agencies' safeguarding functions, including: serious case review . The LCSB holds all partners to account equally.
- This Board is accountable for its work to the Improvement Board while it remains in place and is preparing to continue the work of the Improvement Board, once disestablished.

Calderdale Social Care Improvement Board

- This Board is responsible for ensuring that all aspects of Social Care work with children are improving with specific reference to those concerns detailed in the DfE improvement notice. This is primarily concerned with the Council's Children's Social Care function, though the work of all partners as they perform their safeguarding role is also of concern to the Improvement Board.
- All partners and the LCSB itself are accountable to the Improvement Board for their work in this regard. Once the improvement notice is lifted the role and function of the Improvement Board will revert to the LCSB.
- All three Boards will maintain a strategic planning and information sharing relationship with both the CYPPE and the HWBB.